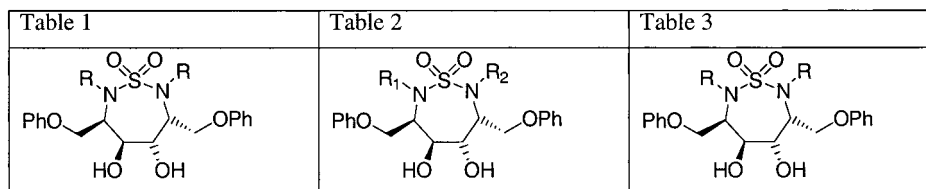


Additions and Corrections

2001, Volume 44

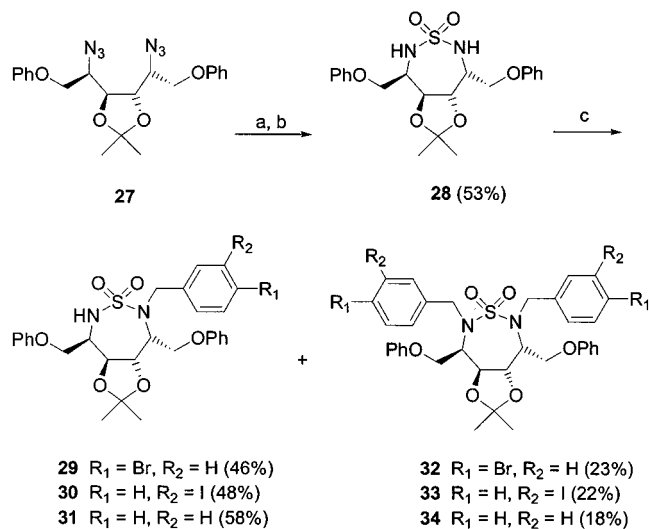
Wesley Schaal, Anna Karlsson, Göran Ahlsén, Jimmy Lindberg, Hans O. Andersson, U. Helena Danielson, Björn Classon, Torsten Unge, Bertil Samuelsson, Johan Hultén, Anders Hallberg, and Anders Karlén: Synthesis and Comparative Molecular Field Analysis (CoMFA) of Symmetric and Nonsymmetric Cyclic Sulfamide HIV-1 Protease Inhibitors.

Pages 156–158. The stereochemistry of the structure in the header of Tables 1, 2, and 3 was drawn incorrectly. The corrected structures are shown below:



Page 158. The structures in Scheme 1 were also drawn with the wrong stereochemistry. The corrected scheme is shown below.

Scheme 1^a



^a (a) H₂, Pd/C; (b) sulfamide, pyridine 120 °C; (c) benzylbromide, 4-bromo- or 3-iodobenzylbromide, DMF, K₂CO₃.

JM011105V

10.1021/jm011105v

Published on Web 01/08/2002